

35190

TOROMILL X2

MILLING

Profiling | Facing | Slotting

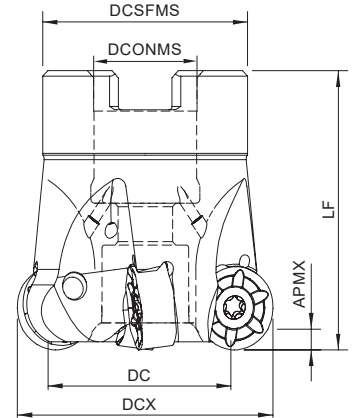
Double-sided round milling insert





Arbor Mounting

GAMP=-7°



Order code Código	Reference Referência Referencia	CICT	Dimensions Dimensões Dimensiones (mm)					WT	Specifications		Insert Pastilha Inserto	Stock
			DCX	DC	DCONMS	DCSFMS	LF		Arbor Type	APMX (mm)		
181111600	040A35190-04-07-016040	4	40	28	16	32	40	0,20	A	3,0	RNHX 1204 MOE...	⊗
181100200	050A35190-05-07-022040	5	50	38	22	40	40	0,24	A	3,0	RNHX 1204 MOE...	⊗
181128800	063A35190-06-07-022050	6	63	51	22	48	50	0,55	A	3,0	RNHX 1204 MOE...	⊗
181128900	080A35190-07-07-027050	7	80	68	27	60	50	0,78	A	3,0	RNHX 1204 MOE...	⊗
181175600	100A35190-09-07-032050	9	100	82	32	70	50	1,00	B	3,0	RNHX 1204 MOE...	⊗

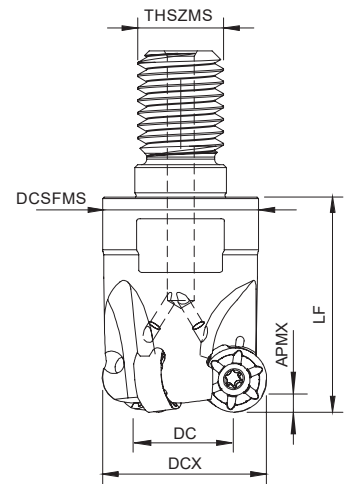
⊗ Stock item | Produto de stock | Itens de stock

○ Available under request | Disponível sobre consulta | Disponible bajo consulta



Threaded Coupling

GAMP=-7°

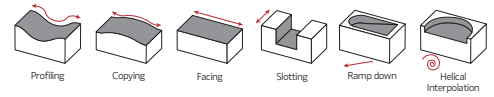


Order code Código	Reference Referência Referencia	CICT	Dimensions Dimensões Dimensiones (mm)					WT	Specifications	Insert Pastilha Inserto	Stock
			DCX	DC	THSZMS	DCSFMS	LF		APMX (mm)		
181128500	032R35190-03-07-M16040	3	32	20	M16	29	40	0,16	3,0	RNHX 1204 MOE...	⊗
181128700	042R35190-04-07-M16040	4	42	30	M16	29	40	0,20	3,0	RNHX 1204 MOE...	○

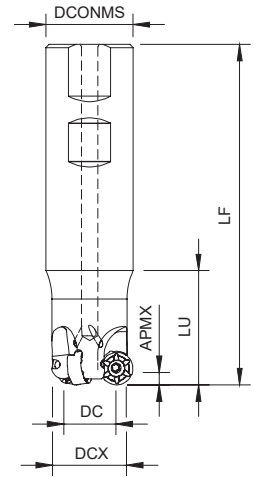
⊗ Stock item | Produto de stock | Itens de stock

○ Available under request | Disponível sobre consulta | Disponible bajo consulta

TOROMILL X2 35190
RNHX 12



Weldon Shank
GAMP=-7°

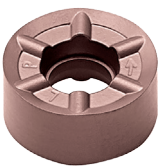


Order code Código	Reference Referência Referencia	CICT	Dimensions Dimensões Dimensiones (mm)					WT	Specifications	Insert Pastilha Inserto	Stock
			DCX	DC	DCONMS	LF	LU		APMX (mm)		
181087000	032W35190-03-07-032125	3	32	20	32	125	42	0,98	3,0	RNHX 1204 MOE...	☺

☺ Stock item | Produto de stock | Itens de stock

○ Available under request | Disponível sobre consulta | Disponible bajo consulta

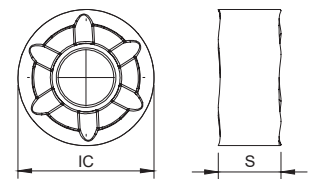
RNHX 1204... Inserts | Pastilhas | Plaquitas



RNHX-LP



RNHX-MP



RNHX-LP | MP

	⁽²⁾ Grade code	P			M			K		S		Dimensions Dimensões Dimensiones (mm)	
		PVD			PVD			PVD		PVD			
		T1	P4	Z2	X9	Z2	Z3	T1	P4	X9	Z3		
⁽¹⁾ Geometry code	ISO Reference	PHP920	PHP930	PHP530	PHH930	PHP530	PHH530	PHP920	PHP930	PHH930	PHH530	IC	S
1112030	RNHX 1204 MOE-LP	☺		☺	☺	☺	☺			☺	☺	12,00	4,76
1112052	RNHX 1204 MOE-MP	☺	☺					☺	☺			12,00	4,76

☺ First choice | Primeira opção | 1ª opción

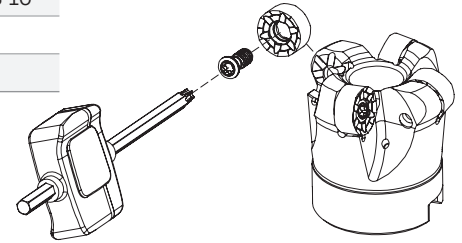
☺ Stock item | Produto de stock | Itens de stock

○ Available under request | Disponível sobre consulta
Disponible bajo consulta

Insert order code = (1) Geometry Code + (2) Grade Code

SPARE PARTS Acessórios | Repuestos

Cutter DC	Insert Screw	Key (Torx)	Order separately		Screw	DIN 6368 Wrench
			Key (Torx - Nm)	Torque Value		
A35190 - 40-80	P0401065	XT15	DT1530	3,00	-	-
A35190 - 100	P0401065	XT15	DT1530	3,00	J0164110	SD6368-16
R35190 - 32-42	P0401065	XT15	DT1530	3,00	-	-
W35190 - 32	P0401065	XT15	DT1530	3,00	-	-



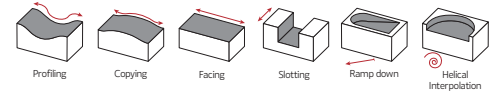
GRADES SELECTION GUIDE Guia para selecção de graus | Tabla para selección de calidades

ISO	PSM	Material	HB (Brinell)	Grades				
				← Wear Resistance			Toughness →	
				PHP920	PHP930	PHH930	PHP530	PHH530
P	1	Unalloyed Steel	125-220	✓	✓		✓	
	2	Low-Alloyed Steel	220-280	✓	✓		✓	
	3	High-Alloyed Steel	280-380	✓	✓		✓	
M	4	SS - Ferritic / Martensitic	200-330			✓	✓	✓
	5	SS - Austenitic	200-330			✓		✓
	6	SS - Austenitic-ferritic (Duplex)	230-260			✓		✓
K	7	Malleable Cast Iron	130-230	✓	✓			
	8	Grey Cast Iron	180-245	✓	✓			
	9	Nodular Cast iron	160-250	✓	✓			
S	11	Heat Resistant Super Alloys	200-320			✓		✓

● Good Conditions
 ● Average Conditions
 ● Difficult Conditions

RECOMMENDED CUTTING CONDITIONS Condições de corte recomendadas | Condiciones de corte recomendables

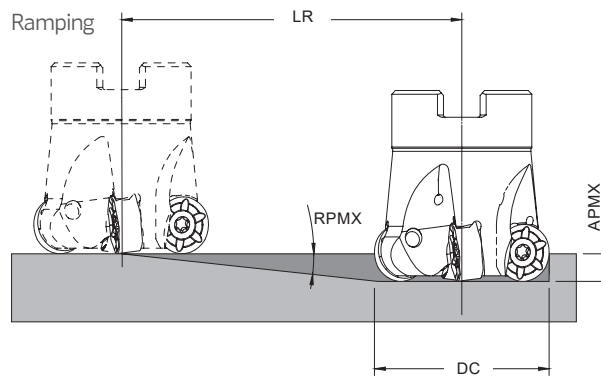
ISO	PSM	Material	HB (Brinell)	Vc (m/min)					Feed fz (mm/t)	
				← Wear Resistance			Toughness →		RNHX 12... LP	RNHX 12... MP
				PHP920	PHP930	PHH930	PHP530	PHH530		
P	1	Unalloyed Steel	125-220	180-250	160-230	-	180-340	-	0,15-0,45	0,15-0,50
	2	Low-Alloyed Steel	220-280	160-230	140-210	-	180-340	-	0,15-0,45	0,15-0,50
	3	High-Alloyed Steel	280-380	140-220	120-200	-	180-330	-	0,15-0,45	0,15-0,45
M	4	SS - Ferritic / Martensitic	200-330	-	-	140-210	150-270	170-280	0,10-0,35	-
	5	SS - Austenitic	200-330	-	-	120-170	-	160-280	0,10-0,35	-
	6	SS - Austenitic-ferritic (Duplex)	230-260	-	-	100-150	-	150-260	0,10-0,35	-
K	7	Malleable Cast Iron	130-230	-	150-280	-	-	-	-	0,15-0,55
	8	Grey Cast Iron	180-245	-	130-230	-	-	-	-	0,15-0,55
	9	Nodular Cast iron	160-250	-	80-190	-	-	-	-	0,15-0,50
S	11	Heat Resistant Super Alloys	200-320	-	-	30-110	-	30-150	0,05-0,30	-



CHIP BREAKER SELECTION GUIDE Guia para aplicações do quebra- aparas | Guía para aplicación del rompevirutas

ISO	PSM	Material	HB (Brinell)	Chip breaker application	
				1st choice	Difficult Operations
P	1	Unalloyed Steel	125-220	LP	MP
	2	Low-Alloyed Steel	220-280	LP	MP
	3	High-Alloyed Steel	280-380	MP	-
M	4	SS - Ferritic / Martensitic	200-330	LP	-
	5	SS - Austenitic	200-330	LP	-
	6	SS - Austenitic-ferritic (Duplex)	230-260	LP	-
K	7	Malleable Cast Iron	130-230	MP	-
	8	Grey Cast Iron	180-245	MP	-
	9	Nodular Cast iron	160-250	MP	-
S	11	Heat Resistant Super Alloys	200-320	LP	-

RAMPING Descida em rampa | Bajada en rampa



Insert	DC	Ramping		
		RPMX	APMX	Min LR
RNHX 1204	32	1	3	171,9
	40	0,8	3	214,8
	42	0,8	3	214,8
	50	0,8	3	214,8
	63	0,6	3	286,5
	80	0,5	3	343,8

35190

TOROMILL X2

Double-sided round milling insert



Check the QrCode for more information



HEADQUARTERS

PALBIT. S.A.

T (+351) 234 540 300 | F (+351) 234 540 301

palbit@palbit.pt | www.palbit.pt

Branch office

PALBIT México, S de RL de CV

T (+52) 5555 454 543 | F (+52) 5552 509 190

info@palbit.com.mx | www.palbit.pt/mx

Branch office

PALBIT Brasil

T (+55) 011 25 343 648

palbit@palbit.com.br | www.palbit.pt/br